



Recent and New GNSS-RO missions: Quality Assessment and Comparative Data Assimilation

Francois Vandenberghe, Suryakanti Dutta, Hailing Zhang, Hui Shao
and James Yoe

Joint Center for Satellite Data Assimilation (JCSDA)

NOAA New Platforms Evaluation



New platforms are **evaluated** for operations during a **Winter** and **Summer** season in two steps:

1. **O-B statistics** (Count, Bias, RMSE, rejection) are computed against NCEP **operational 3-9hr forecasts**.
2. **Assimilation impact**: the full operational suite is applied in cycling mode to **assimilate** the **new dataset** with current operational observations and compare to a **control** run

NOAA New Platforms Evaluation



Current platforms assimilated in operations are:
COSMIC-1, MetOp-A&B, TerraX & TandemX

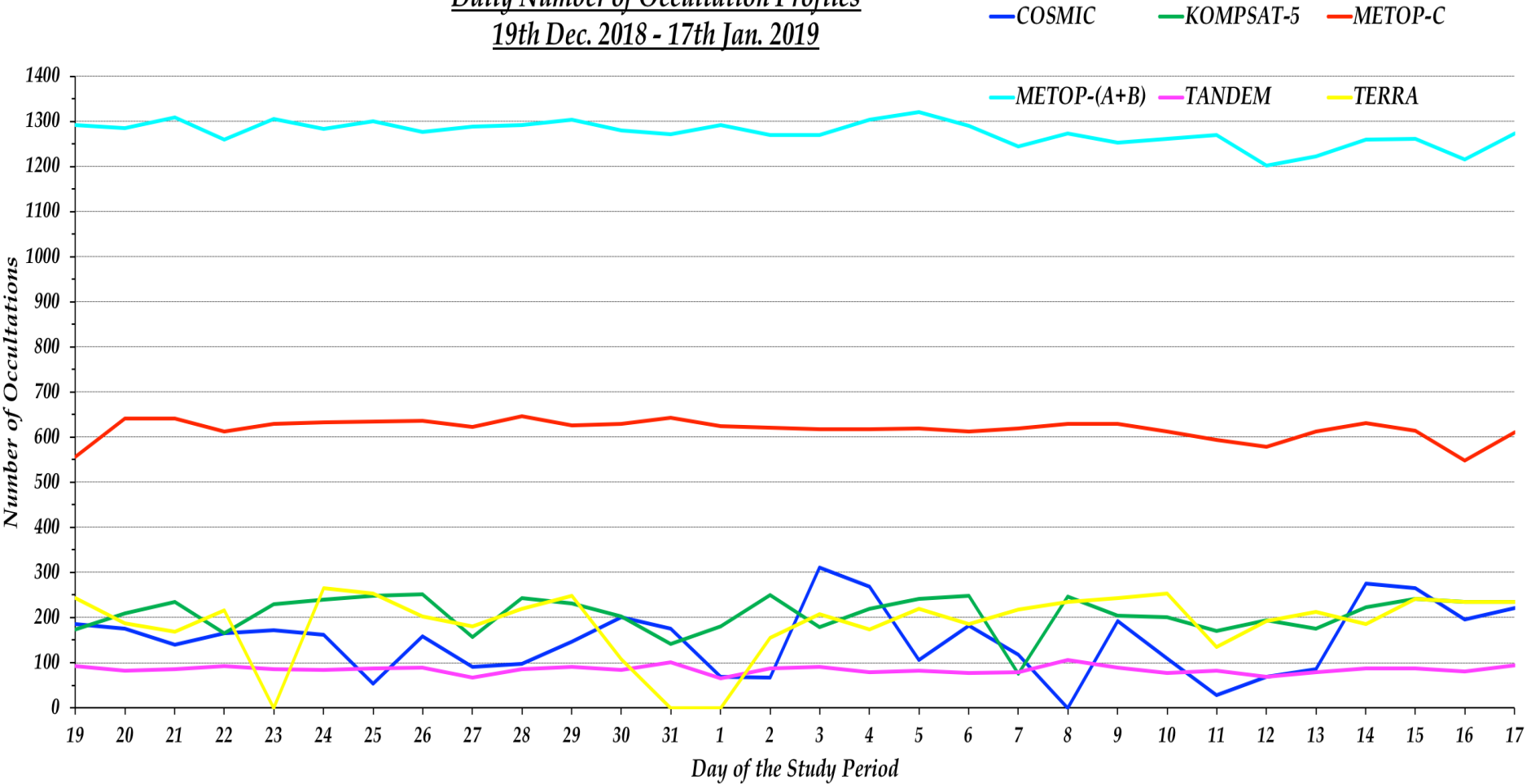
Recent JCSDA evaluations include:

- **Kompsat-5** Jun & Dec 2016
- **Megha-Tropiques** Jan & Jun 2018
- **PAZ** Jun 2018
- **MetOp-C** Jan 2019
- **COSMIC-2** Aug 2019 (first look)

MetOp-C data count

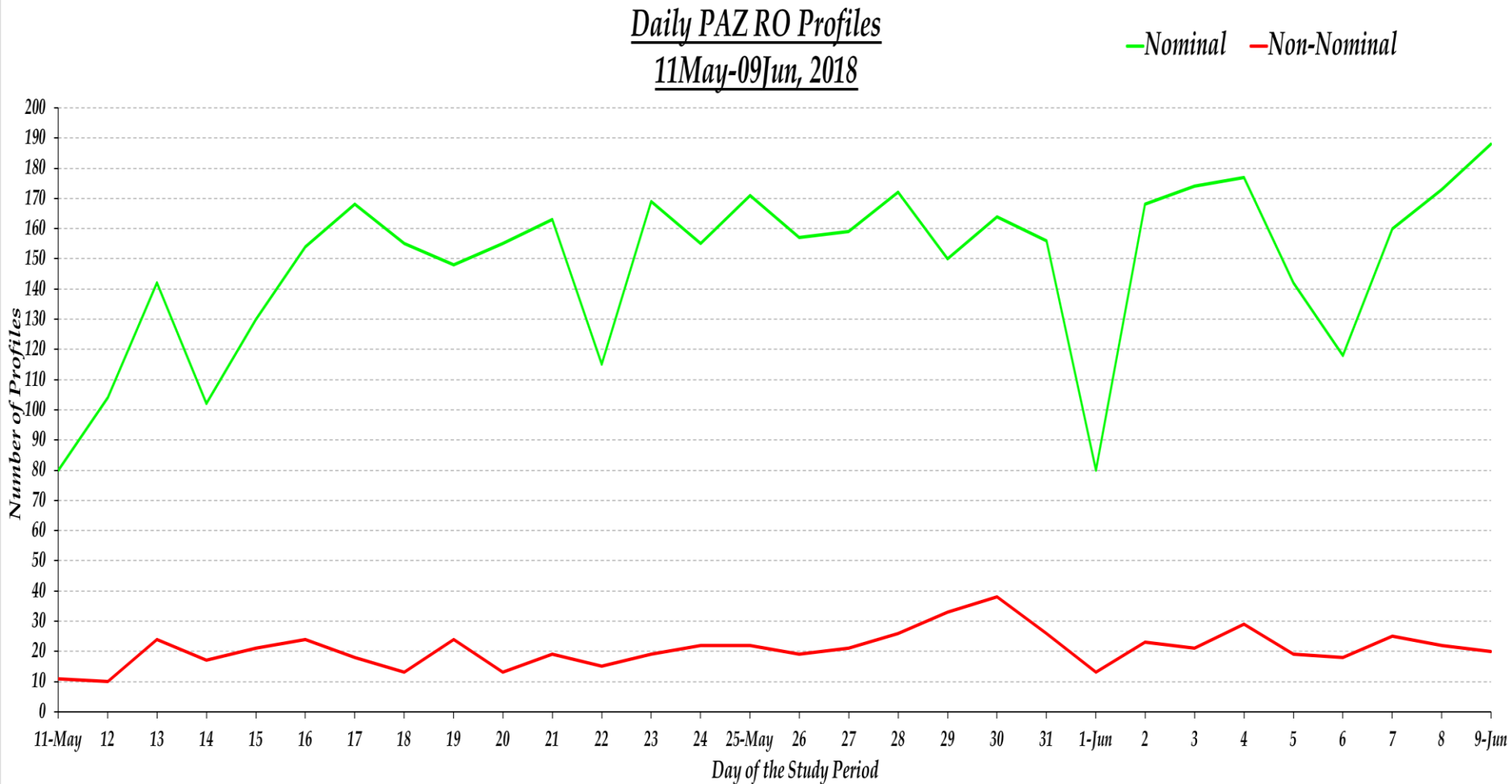


Daily Number of Occultation Profiles
19th Dec. 2018 - 17th Jan. 2019



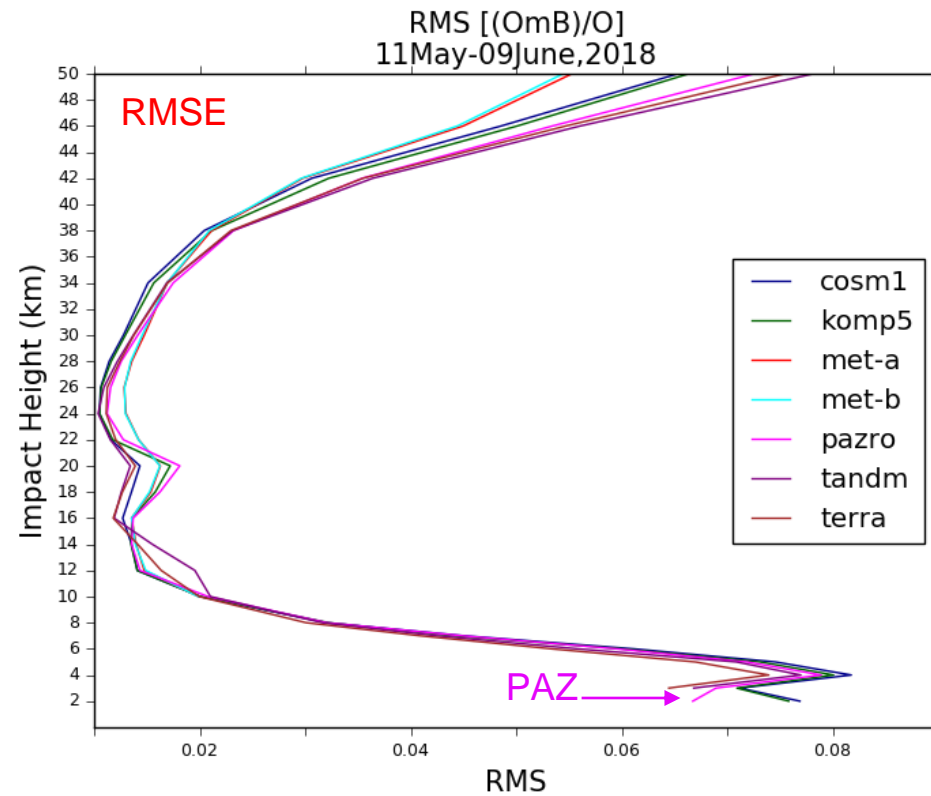
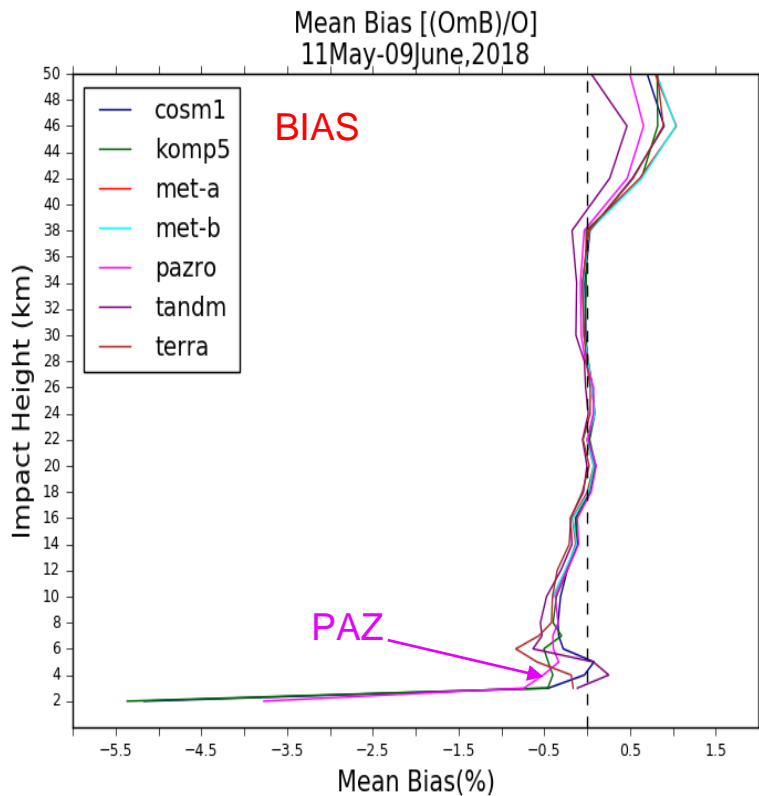
MetOp-C data count, 19 Dec 2018 – 17 Jan, 2019

PAZ data count



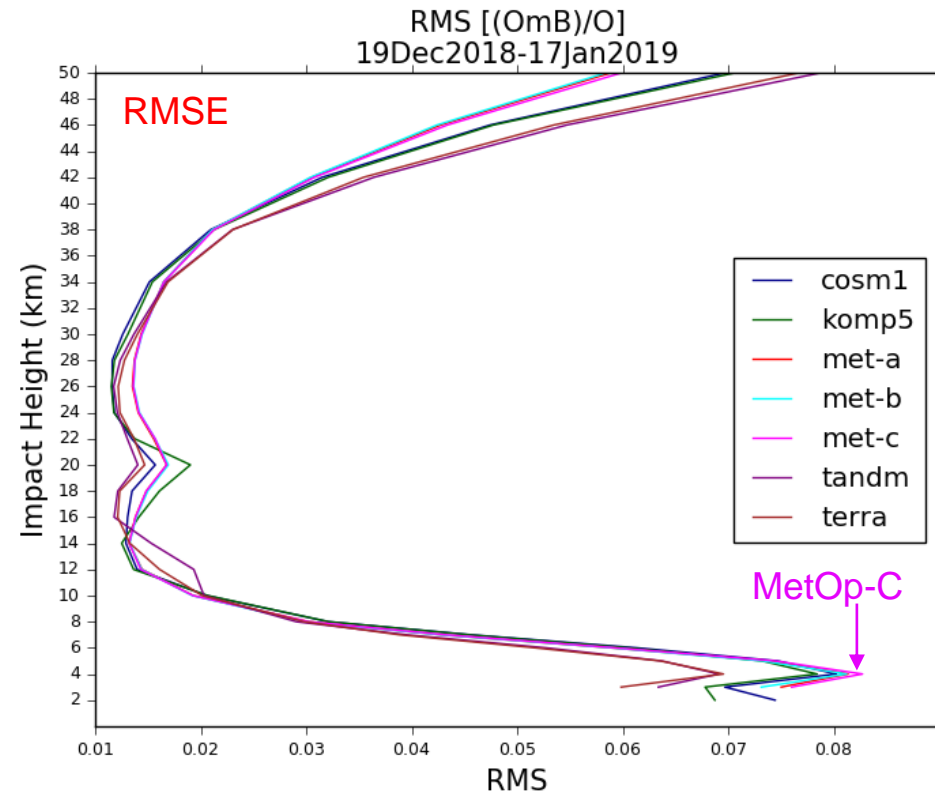
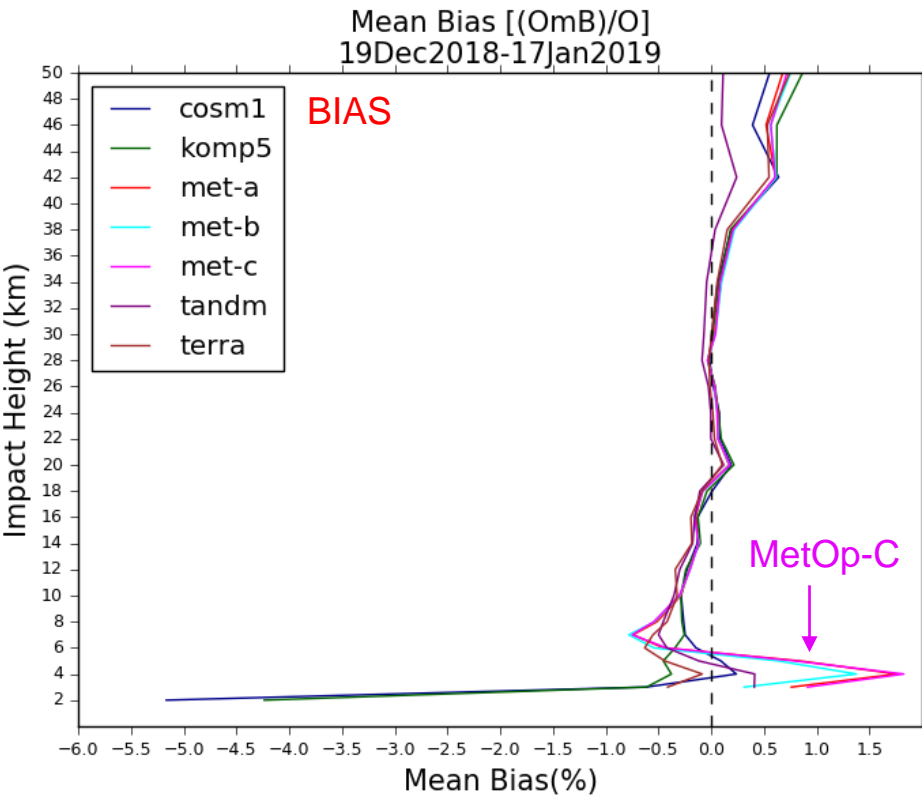
PAZ data count, 11 May – 09 June, 2018

PAZ Statistics (after GSI QC)



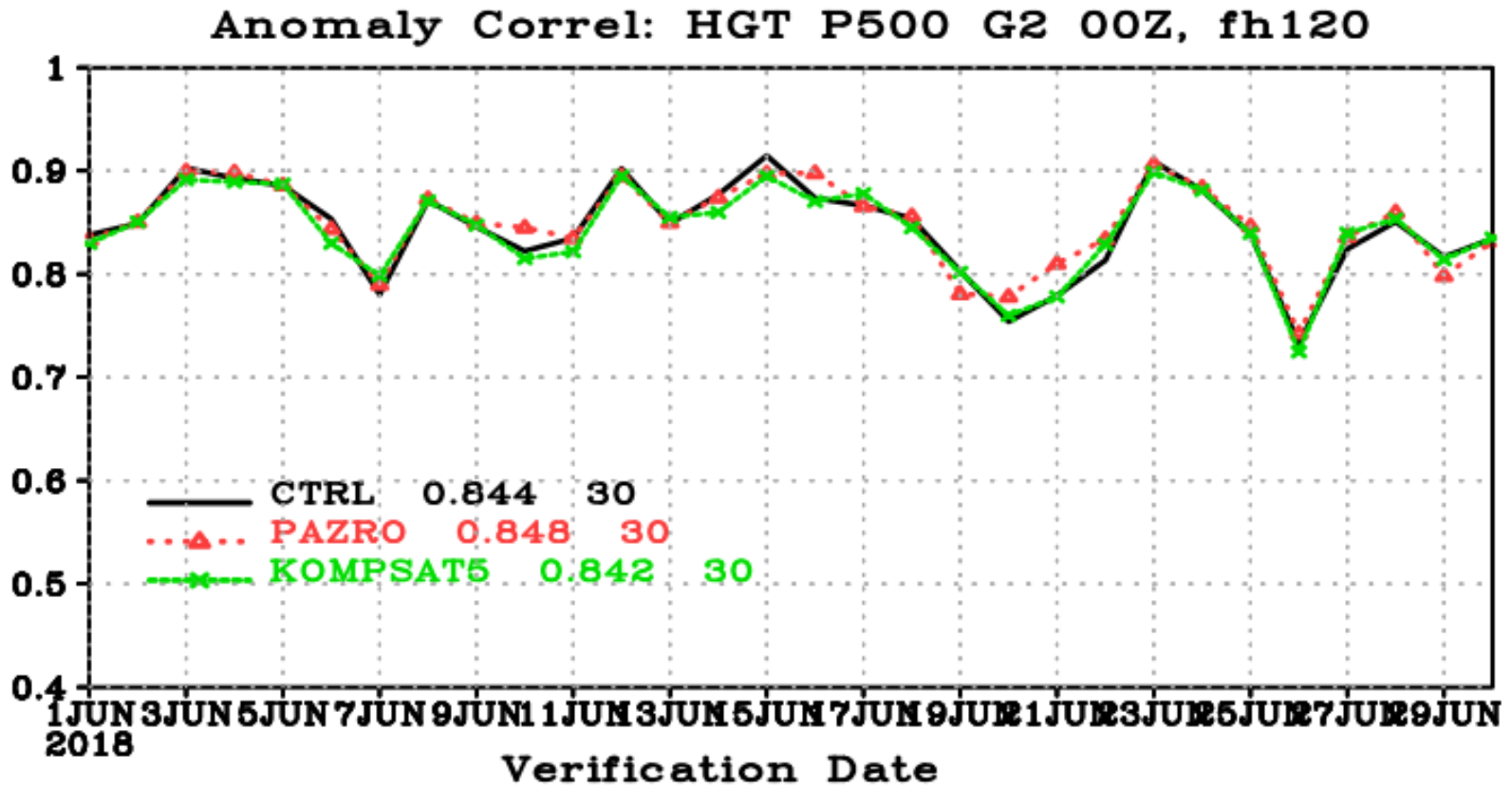
PAZ Bias and RMSE, 11 May – 09 June, 2018

MetOp-C Statistics (after GSI QC)



MetOp-C Bias and RMSE, 19 Dec – 17 Jan, 2019

PAZ Forecast Impact



5-day forecast 500hPa Height Anomaly Correlation

CTRL: operational configuration

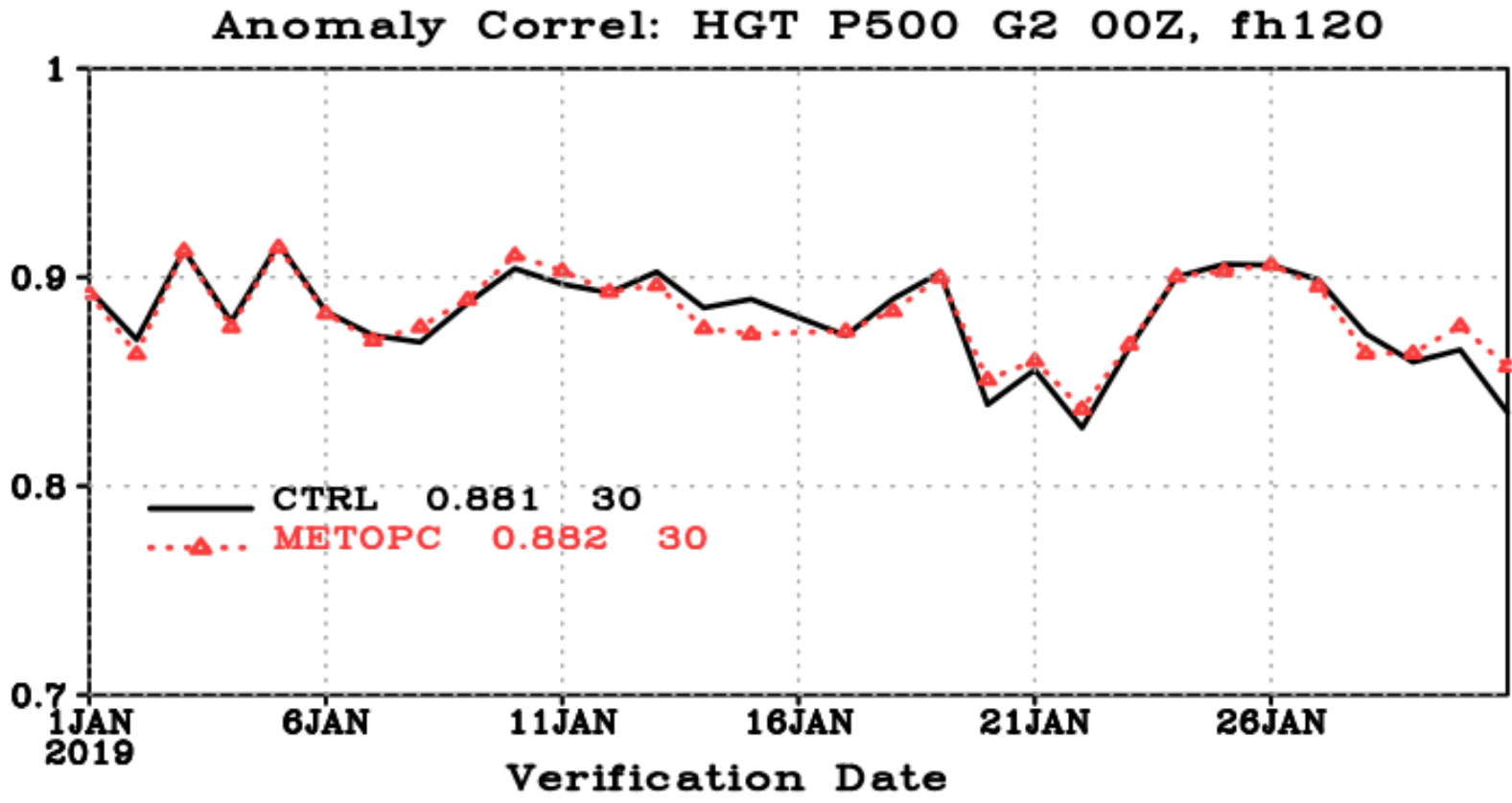
PAZRO: CTRL + PAZ assimilation

KOMPSAT5: CTRL+KOMPSAT5 assimilation

June 01-30, 2018



METOP-C Forecast Impact



5-day forecast 500hPa Height Anomaly Correlation

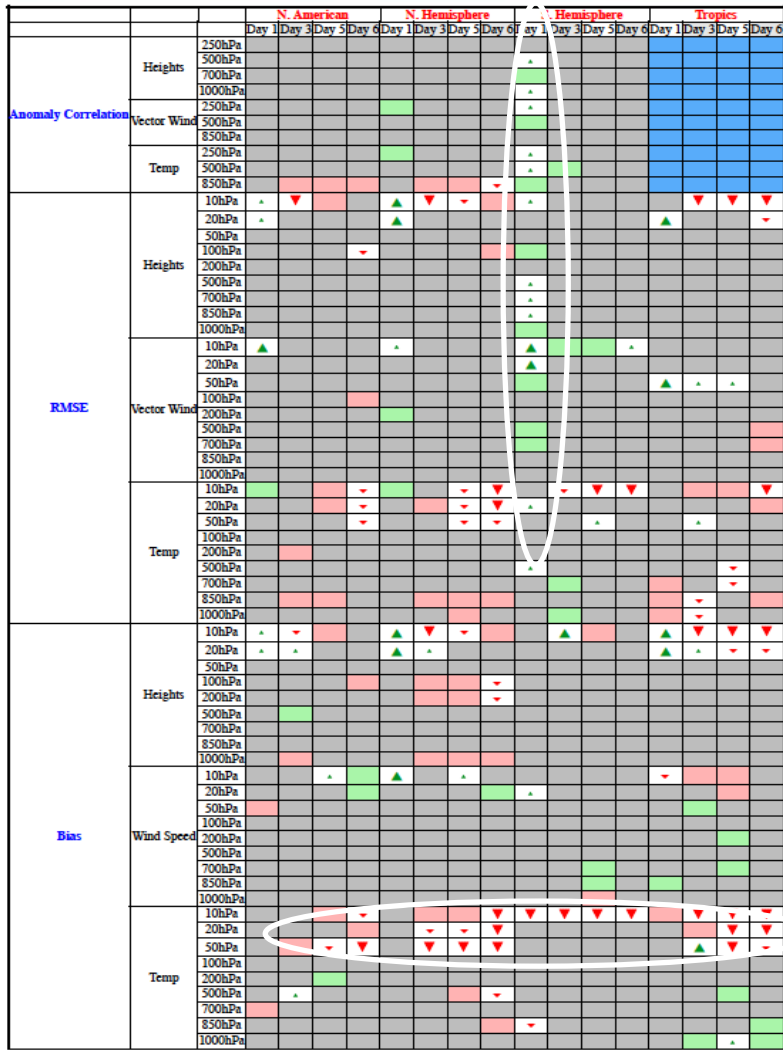
CTRL: operational configuration

METOPC: CTRL + METOP-C assimilation

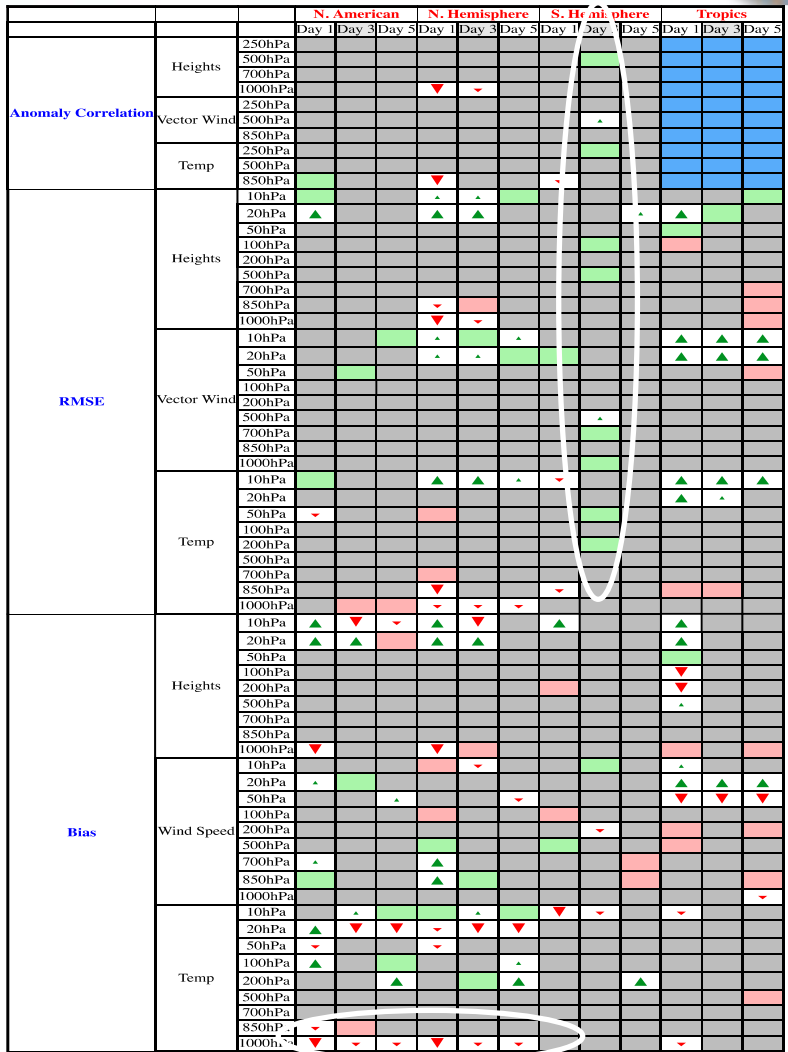
January 01-31, 2019



PAZ/MetOp-C Forecast Impact



PAZ June 1-30, 2018



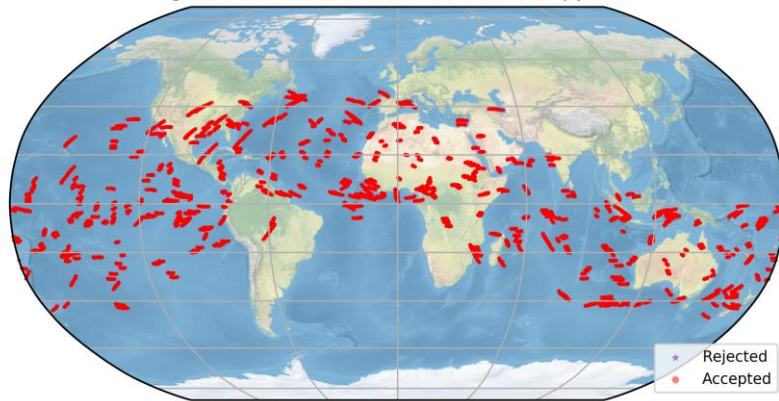
MetOp-C Jan 1-30, 2018

First Look at COSMIC 2



13 days between July 26-August 15, 2019

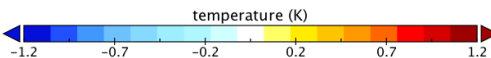
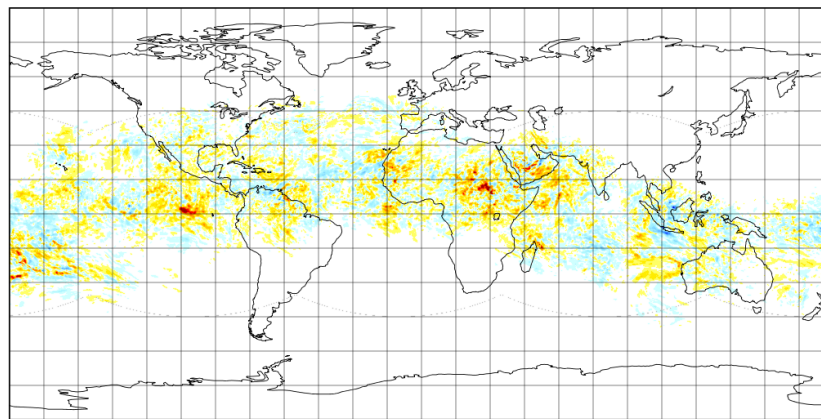
Observation locations
gfs[c768] 20190727.12Z cosmic2[ropp2d]



GFS v14

Num accepted obs: 166967 Num rejected obs: 19293

COSMIC2 Temperature Analysis Increment at 500hPa
JEDI 3D-EnVar - July 27, 2019 at 12z



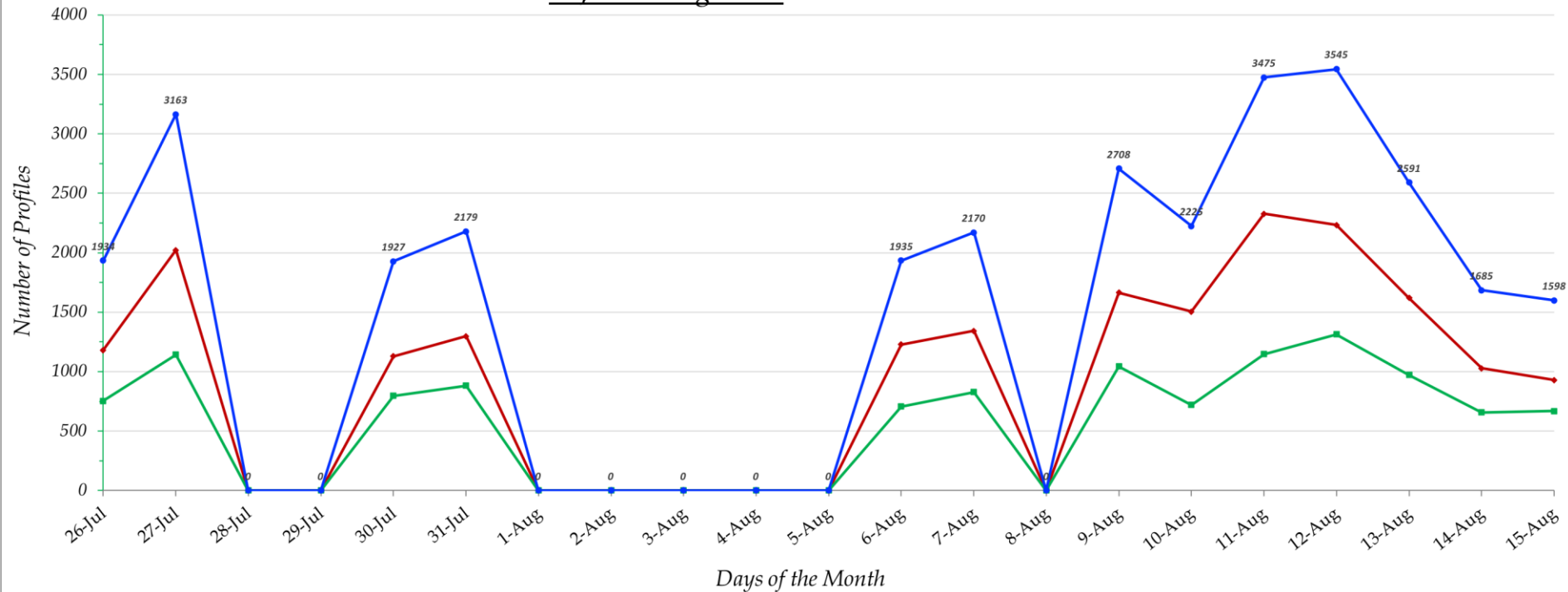
Data Min = -1.3, Max = 1.6, Mean = 0.0

COSMIC2 Data Counts



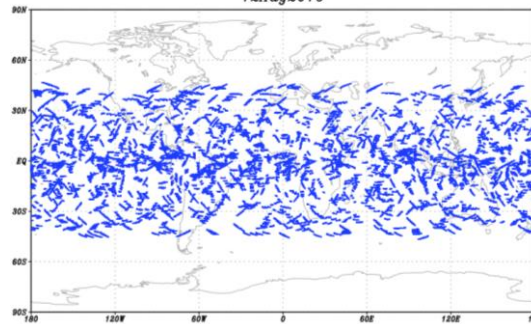
Daily Number of COSMIC-2 GNSS-RO Profiles
26Jul-15Aug 2019

—GPS —GLONASS —TOTAL



Days of the Month

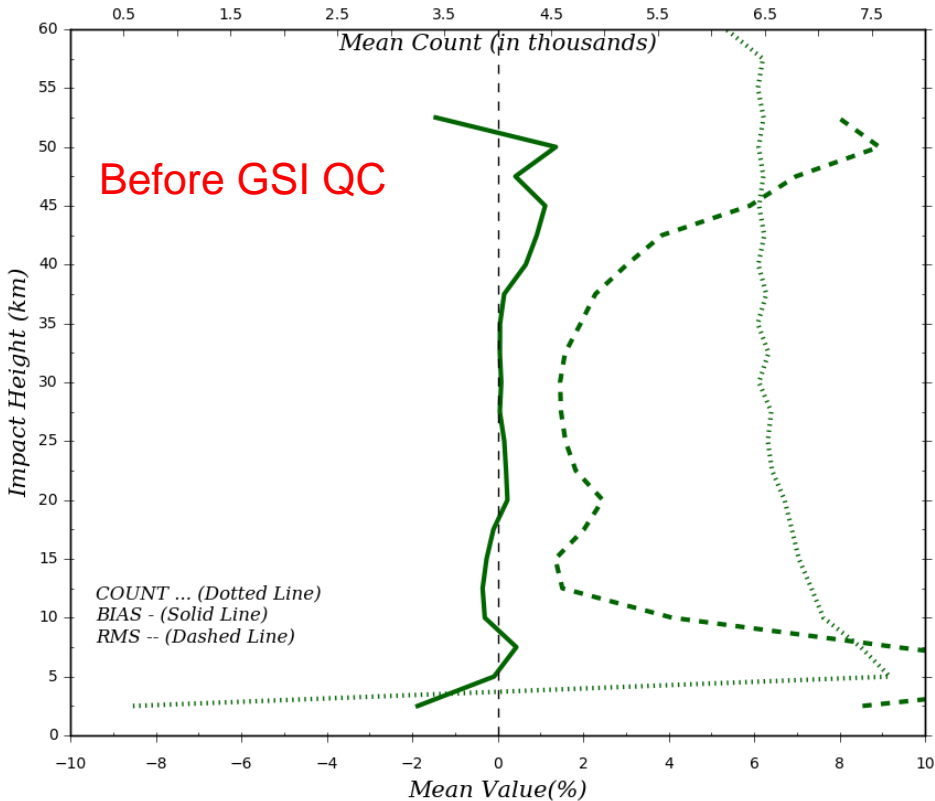
COSMIC-2 GNSS-RO Locations
12Aug2019



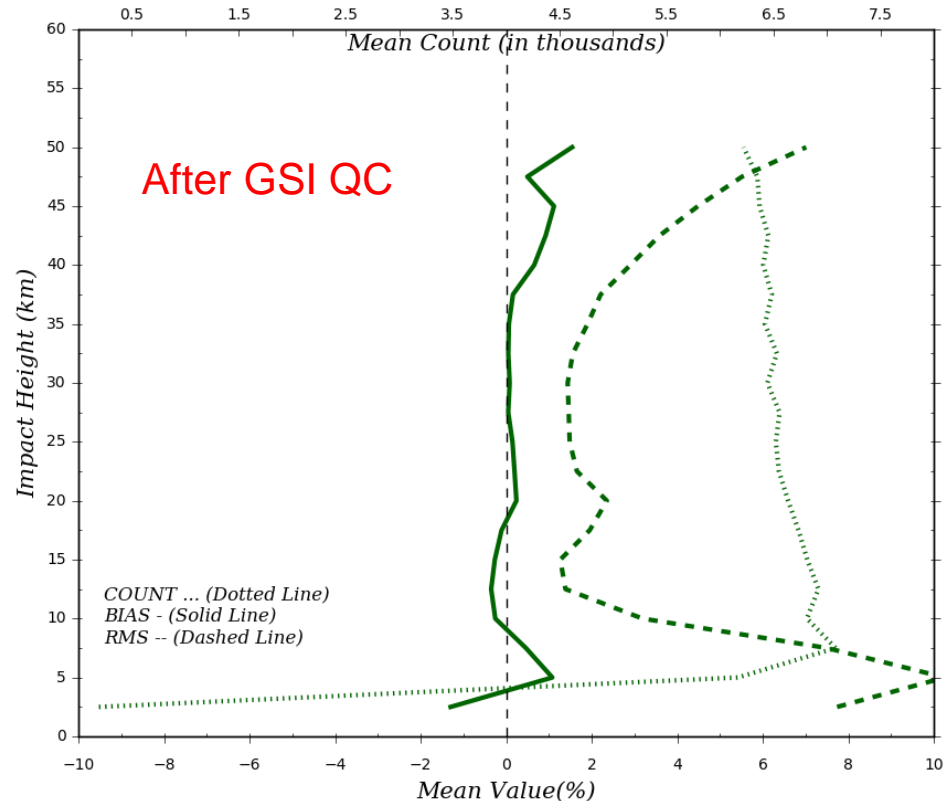
COSMIC-2 Statistics (13 days)



COSMIC-2: Diagnostics - PreQC [(OmB)/B]
26Jul-15Aug2019 - Global



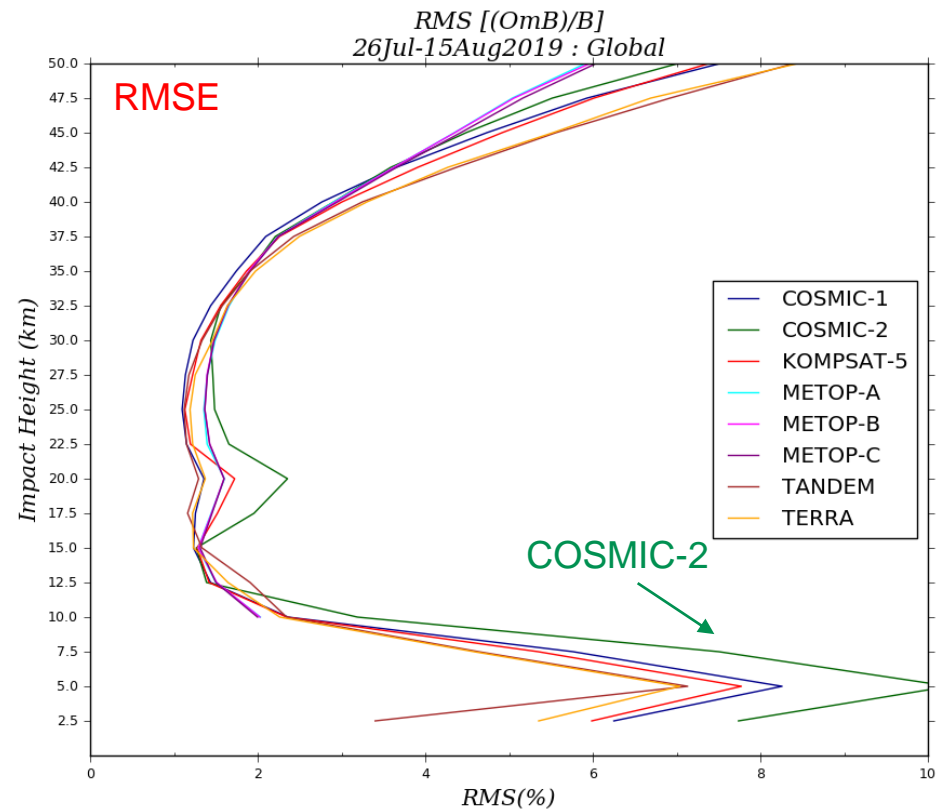
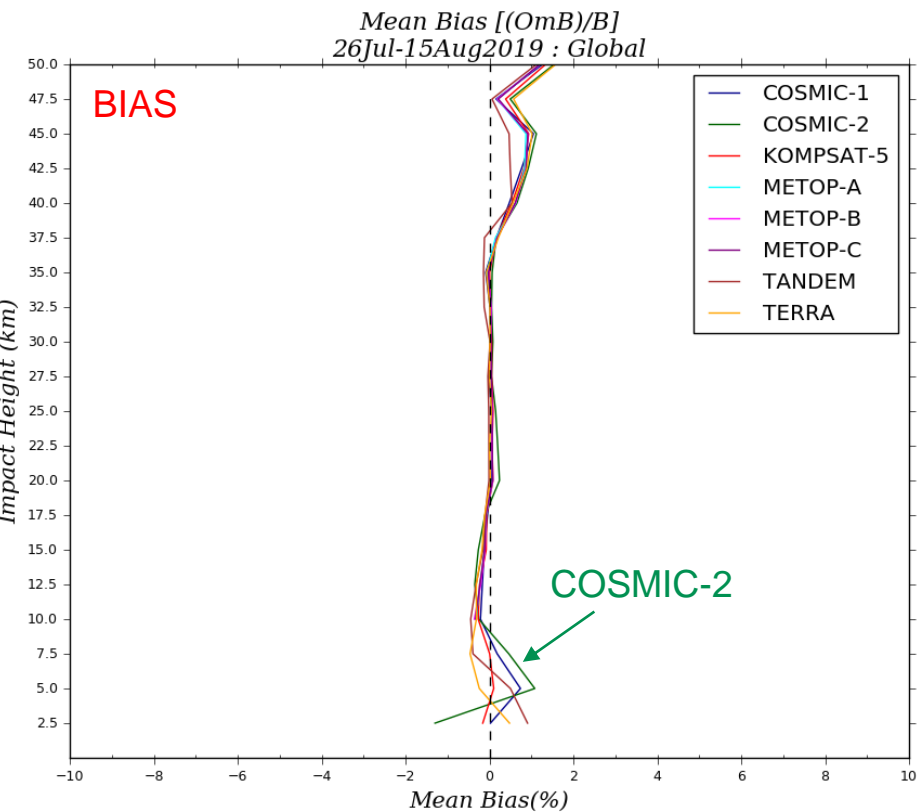
COSMIC-2: Diagnostics - PostQC [(OmB)/B]
26Jul-15Aug2019 - Global



COSMIC-2 bias, RMSE and data count, 26Jul – 15 Aug 2019

GFS v14

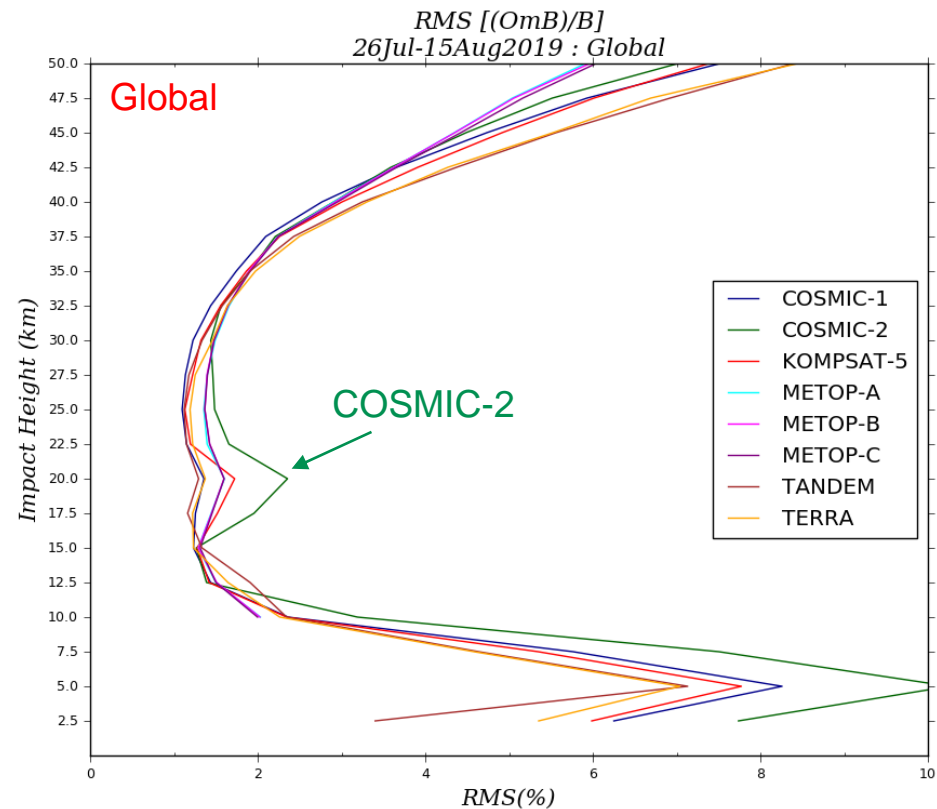
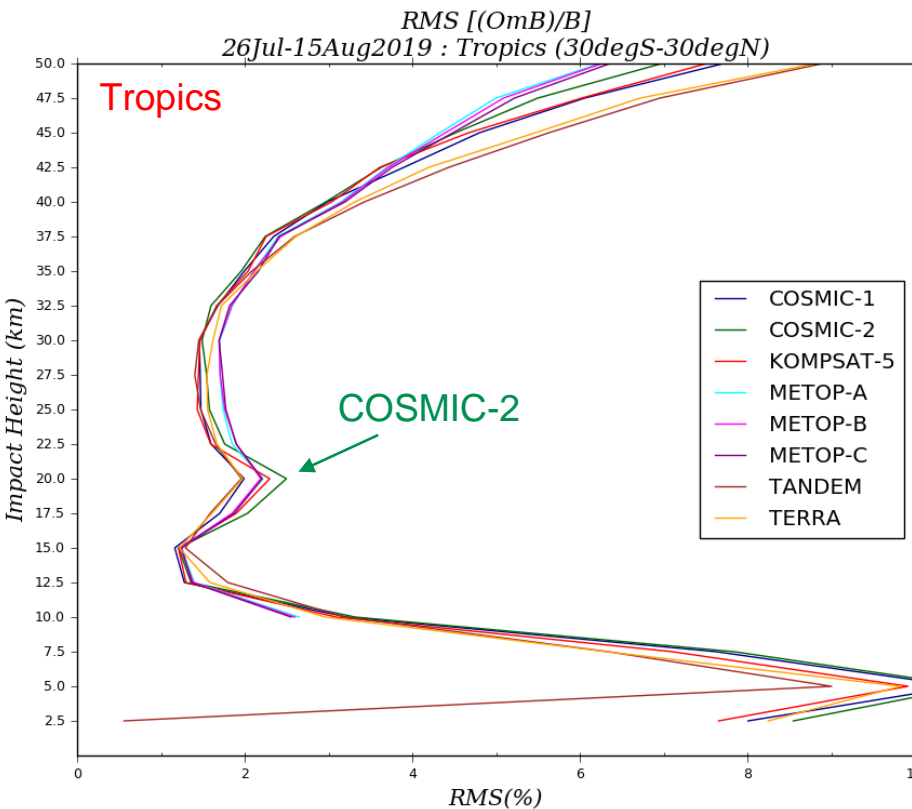
COSMIC-2 Statistics (13 days)



COSMIC-2 bias, RMSE and data count, 26Jul – 15 Aug 2019

GFS v14

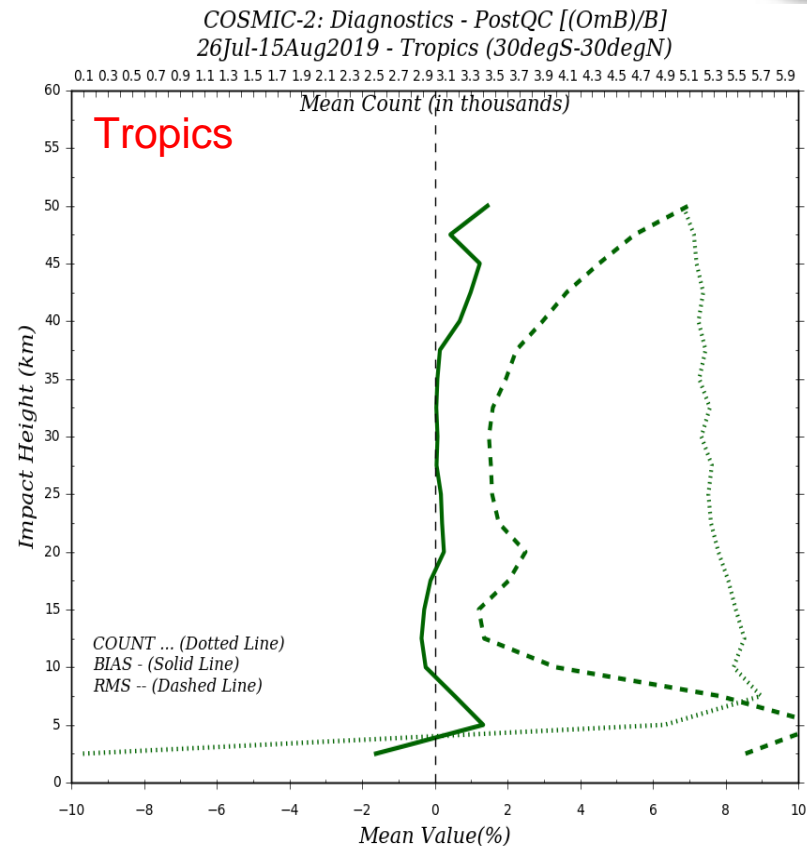
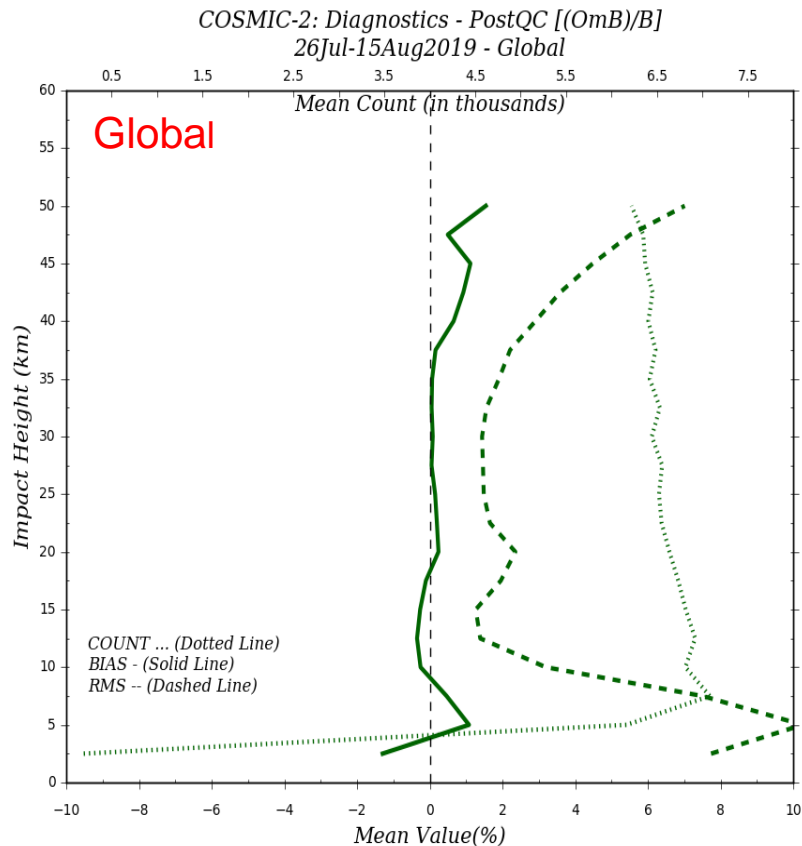
COSMIC-2 Statistics (13 days)



COSMIC-2 RMSE **Global** vs **Tropics**, 26Jul – 15 Aug 2019

GFS v14

COSMIC-2 Statistics (13 days)

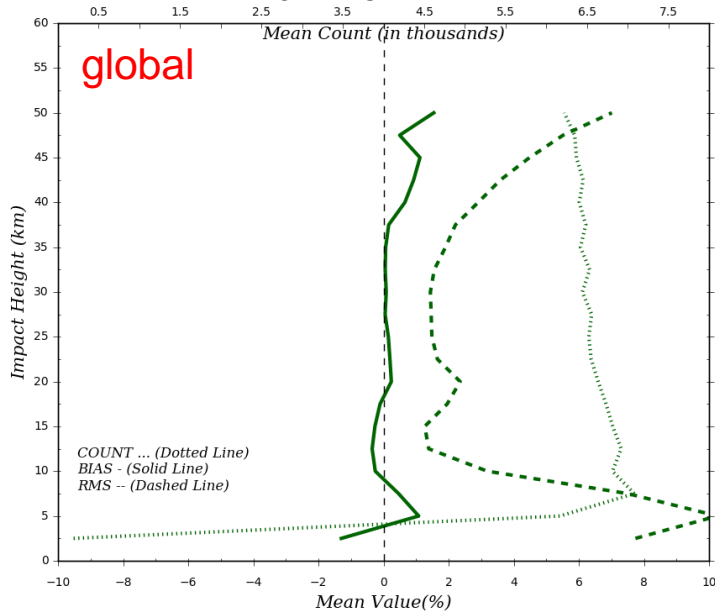


COSMIC-2 bias, RMSE and data count, 26Jul – 15 Aug 2019

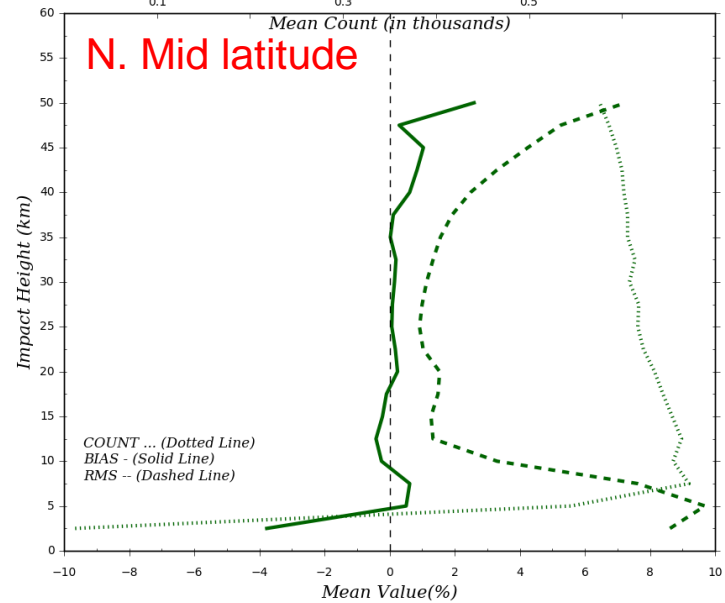
GFS v14



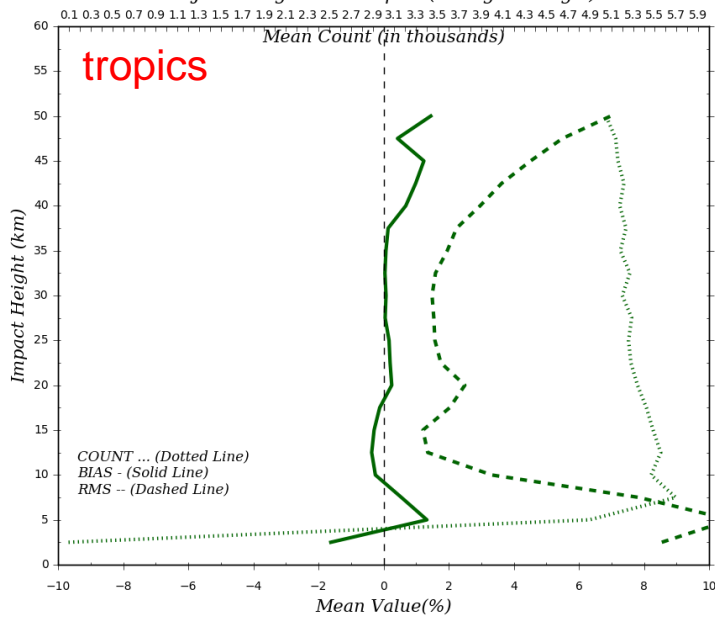
COSMIC-2: Diagnostics - PostQC [(OmB)/B]
26Jul-15Aug2019 - Global



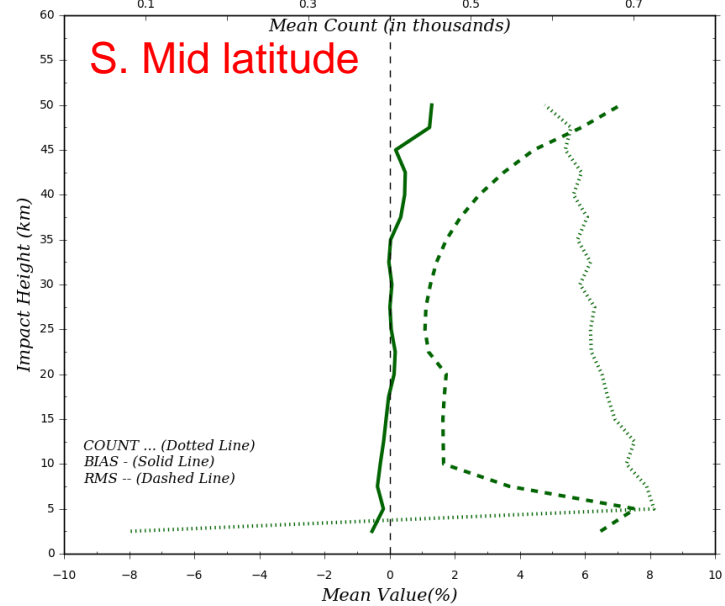
COSMIC-2: Diagnostics - PostQC [(OmB)/B]
26Jul-15Aug2019 - North Extra-Tropics (30degN-60degN)



COSMIC-2: Diagnostics - PostQC [(OmB)/B]
26Jul-15Aug2019 - Tropics (30degS-30degN)



COSMIC-2: Diagnostics - PostQC [(OmB)/B]
26Jul-15Aug2019 - South Extra-Tropics (30degS-60degS)



Summary



1. PAZ (Summer) and MetOp-C (Winter) found to have a neutral/positive impact on forecast. Evaluation for the other seasons is in progress.
2. COSMIC-2 initial data look promising. Larger variability in the lower tropopause.
3. Fair comparisons can only be made in the tropics.
4. GSI not tuned for COSMIC-2.
5. Full evaluation must be done with NOAA new FV3-GFS operational model.